

Apartment First line of the Mediterranean Sea

Spain, Estepona

Apartment - REF: TGS-A1234



Price: 3.600.000 €

Nº Bedrooms: 3	Nº Bathrooms: 4	Nº parking's: 3	M² built: 231 m²	M² Terrace: 116 m²	Exposure: South	Nº Floors: 2	Wifi
Private lift	Air conditioning	BBQ	Dishwasher	TV	Private garden	Communal pool	Indoor pool
Distance to sea: 100m	Distance to centre: 10km					Heated Pool	Communal garden
						Sea view	Beach Front
						Store Room	Garden View
							Gym/Fitness

Activities in resort

Cycling	Golf	Surfing	Tennis
---------	------	---------	--------



PRICES FROM / PRECIOS DESDE

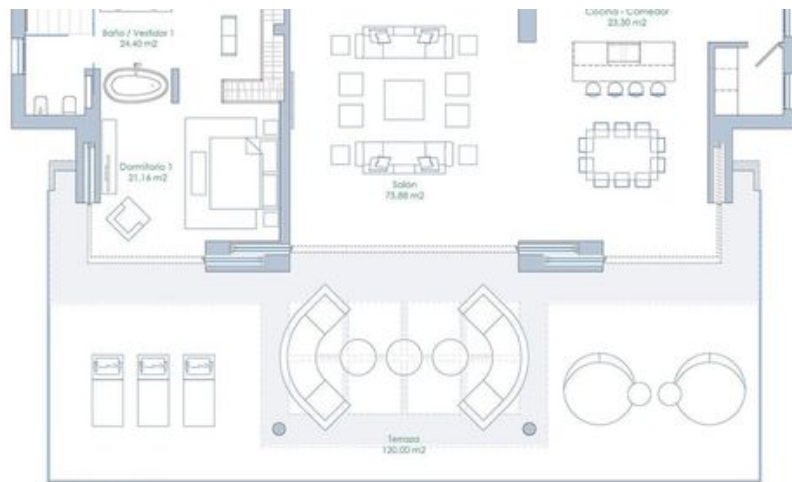
Built Sup. Const. Vivienda	Communal Sup. Const. Comunes	Terrace (built) Sup. Const. Terraza	Basement-storage Sótano-trastero	Total built Total Sup. Construida	Garden Sup. Jardín	Nº of par Nº de aparc
234,17	28,44	80,02	66,76	409,39		
231,02	28,06	116,08	55,88	431,04	176,00	
344,57	45,21	212,58	71,26	673,62		

oms are directly accessed by each of the apartments by a private lift.
nunican directamente con las viviendas a través de un ascensor privado.
included in the prices.
uyen el I.V.A. (10%). Gastos e impuestos de la compraventa no incluidos.

PAYMENT TERMS / FORMA DE PAGO

Reservation/reserva: 20.000 €

fter reservation)/a la firma de escrituras (3 semanas tras la reserva); rest of the amounts plus VAT/ resto d

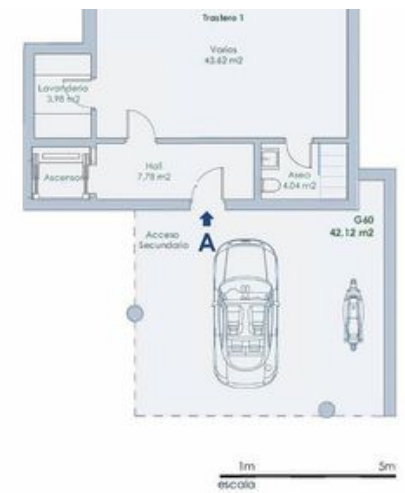


Planta Inferior



Planta Garaje

G1: 42.80 m²
G3: 21.44 m²
G60: 42.12 m²



Planta Garaje

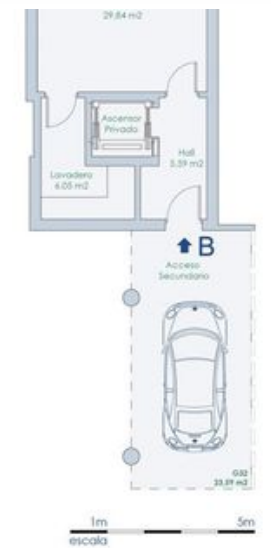
G28: 43.36 m²
G32: 23.59 m²

ATICO "A"
Edificio: 1
SUP. CONSTRUIDA

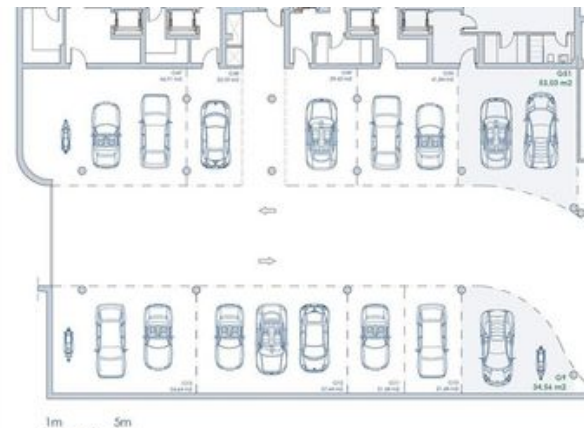


Planta Garaje

G28: 43.36 m²
G32: 23.59 m²



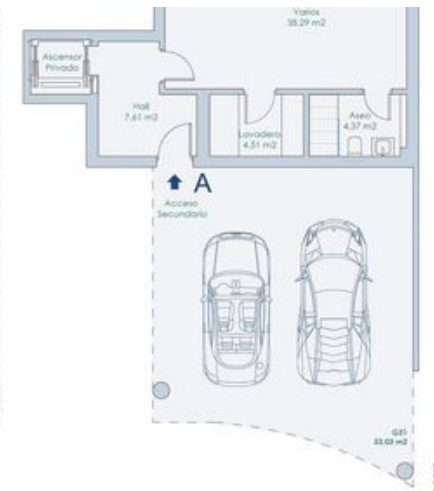
La superficie mostrada en cada estancia, corresponde a superficie útil.



1m 5m
escala

Planta Garaje

G1: 34,56 m²
G2: 53,03 m²



1m 5m
escala

La superficie mostrada en cada estacion, corresponde a superficie ÚT.